

PROJECT DATA

2900 W SAMPLE ROAD
POMPANO BEACH, FLORIDA

SITE DATA

FOLIO ID 4842.21.07.0010
PARCEL SIZE 88,508 S.F. =2.03 AC
IMPACTED AREA 107,760 S.F. = 2.47 AC
EXISTING ZONING B-3 & I-1
EXISTING LAND USE C (COMMERCIAL) & I (INDUSTRIAL)

BUILDING DATA

PROPOSED RACETRAC MARKET BLDG. AREA 5,411 SF

PARKING DATA

TOTAL PARKING REQUIRED RACETRAC BLDG. 22 SPACES
(2 SPACES + 1 SPACE X PUMP) = 2 SPACES + 1 SPACE X 20 PUMPS

(1 SPACE X 500 S.F.)

TOTAL PARKING REQUIRED 22 SPACES

TOTAL PARKING PROVIDED 31 SPACES

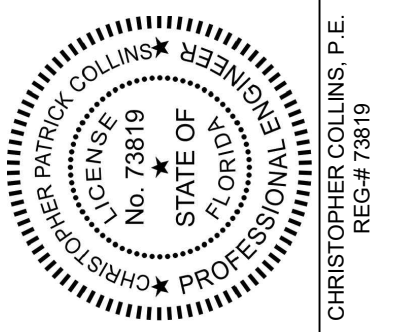
OPEN SPACE DATA

TOTAL PROP. SITE AREA 107,760 SF
TOTAL ROW DEDICATION 5,426 SF
TOTAL PROP. OPEN SPACE 37,182 SF

B.C.H.C.E.D. REF. NO. 200617002

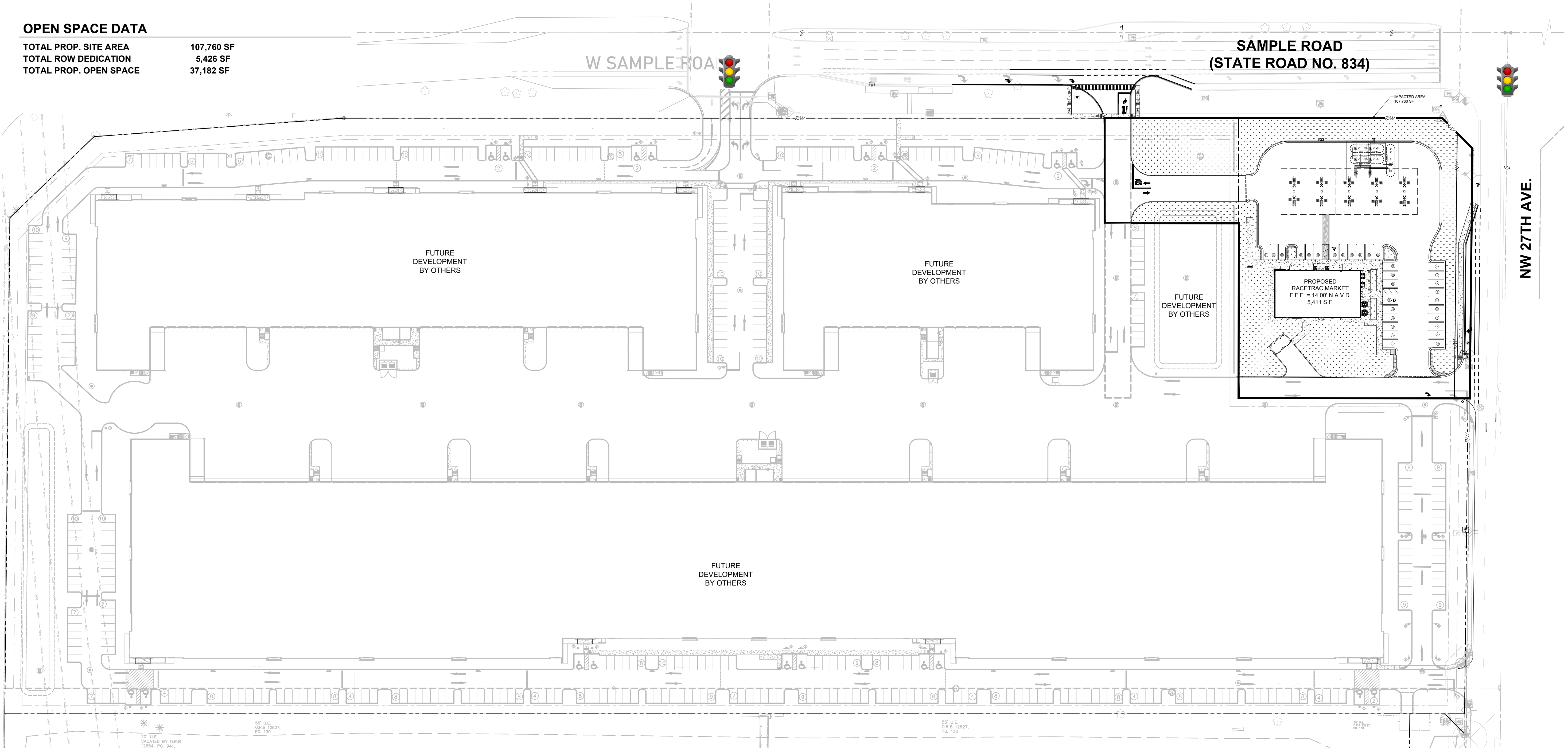
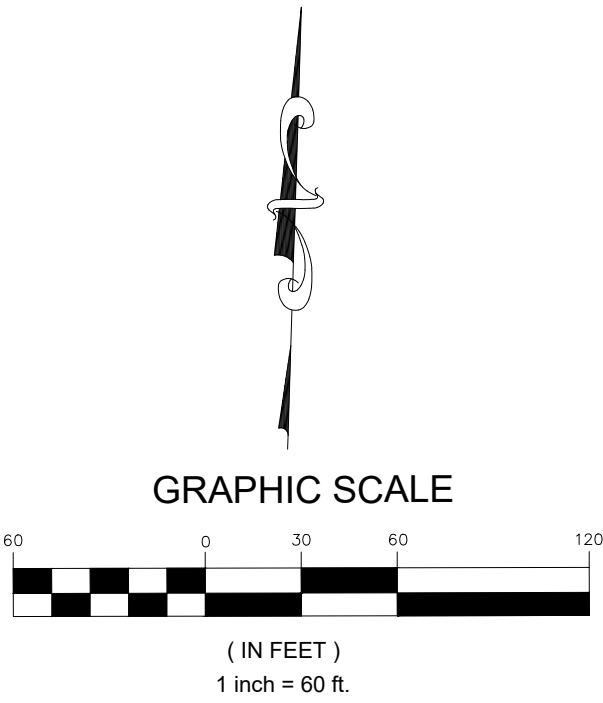


666 N.E. 125th STREET,
SUITE 247
NORTH MIAMI, FL 33161
Phone: 305.720.2079
C.O.A. 33221



8/18/2025
This item has been digitally signed and sealed by Christopher P. Collins, P.E. on the date adjacent to the seal.

Printed copies of this document are not considered signed and sealed and the signature must be verified on any electronics copies.



Revision	△	Date
Comment		
Revision	△	Date
Comment		
Revision	△	Date
Comment		
Revision	△	Date
Comment		
Revision	△	Date
Comment		
Revision	△	Date
Comment		

Designed by:	C.P.C.
Drawn by:	A.T.S.
Checked by:	C.P.C.
Approved by:	C.P.C.
Scale:	1" = 60'
Date:	05/25/2022
Job No.:	I002
© 2025	

Plans for
**FESTIVAL
MARKETPLACE**
2900 W SAMPLE ROAD
POMPANO BEACH,
FLORIDA

**MASTER
SITE PLAN**

Sheet No.
C-6.0

Sunshine811
Call 811 or visit sunshine811.com two full business days before digging to have buried facilities located and marked.
Check positive response codes before you dig!

DRC

PZ22-12000027

10/01/2025

C:\Users\mpg\My Star\811\022 ChwDWG\C-6.0 MASTER SITE PLAN.dwg 8/18/2025 9:49pm